

# SuperBond™

FIXED SYSTEMS

SuperBond™ is a mastic set edge-grain maple parquet which is usually adhered directly to a concrete substrate. The low profile makes it ideal for retrofit and commercial projects. It is not generally used for sport applications.



**INFINITY**  
Wood Floors





1. Maple SuperBond™ Flooring    3. Concrete  
2. Elastomeric Glue

Green Status  
and LEED  
Contributors



- FSC® Certified Maple - MRc7
- EQ - 4.2

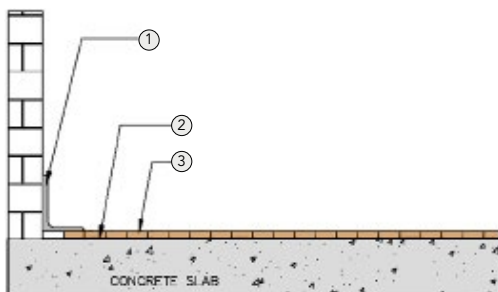
Optional  
Versions

7/16" (12mm) Flooring

System Type

Fixed

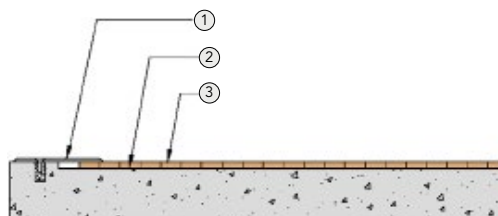
## WALL BASE



1. 3" x 4" (76mm x 101mm) Vent Cove Base
2. Direct Glue to Concrete Using Elastomeric Glue
3. 7/16" (12mm) Maple SuperBond™

7/16" (12mm)

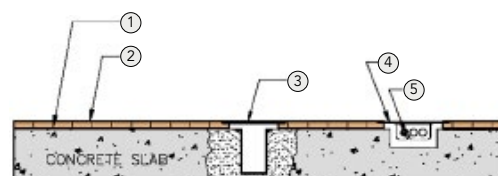
## THRESHOLD



1. 1/4" (6mm) Aluminum Threshold
2. Direct Glue to Concrete Using Elastomeric Glue
3. 7/16" (12mm) Maple SuperBond™

7/16" (12mm)

## EQUIPMENT



1. Direct Glue to Concrete Using Elastomeric Glue
2. 1/2" (12mm) Maple AacerBond™
3. Floor Plate
4. Flush Electrical Box or Scorer's Box
5. Flexible Conduit

It is the policy of Infinity Wood Floors to continuously improve its line of products. Therefore, Infinity Wood Floors reserves the right to change, modify or discontinue systems, specifications and accessories of all products at any time without notice or obligation to purchaser.